

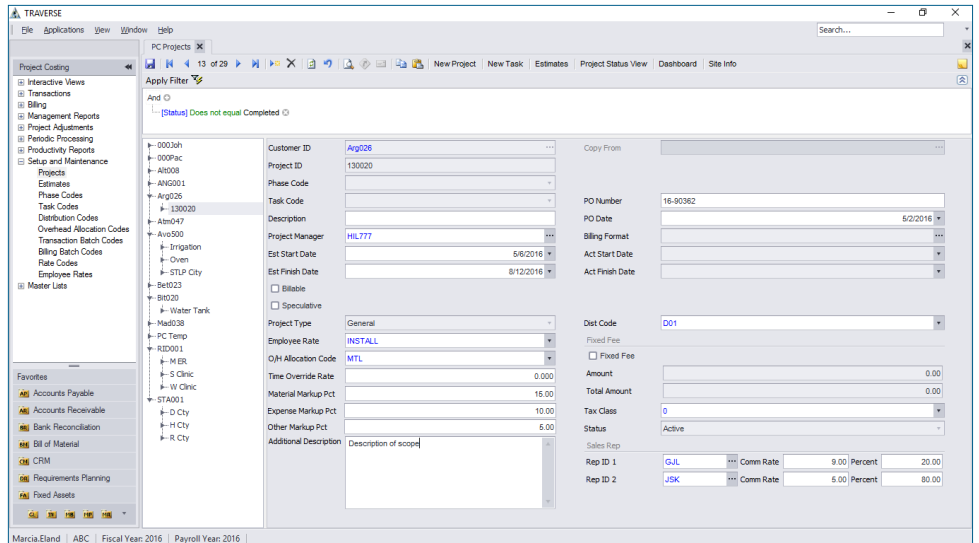


PROJECT COSTING

Keeping tabs on the course of jobs and projects is easy with TRAVERSE Project Costing. Both a time billing and a job costing solution, Project Costing is a fully integrated TRAVERSE application that addresses the needs of companies tracking the progress of project jobs.

Project Costing allows you to define the structure of the project and to make decisions about what type of project it is, how the project levels will accrue income and costs, and how billing will be handled. Interactive views provide actual project-to-date income, cost and gross profit information compared to estimates. Retrieve income, cost, billing, and write-up/down information on a month-to-date, year-to-date, and project-to-date basis.

Create projects that are speculative in nature and change them to billable projects later. A simple entry screen gives you the ability to enter estimates at the project of task level showing both the current estimates and revised estimates.



The screenshot shows the TRAVERSE Project Costing software interface. The main window is titled "PC Projects" and contains a tree view on the left, a central form for project details, and a right-hand panel for additional settings and sales rep information. The tree view shows a hierarchy of project levels, including "Projects", "Task Codes", "Estimates", "Phase Codes", "Distribution Codes", "Overhead Allocation Codes", "Transaction Batch Codes", "Billing Batch Codes", "Rate Codes", and "Employee Rates". The central form displays project details such as "Customer ID", "Project ID", "Phase Code", "Task Code", "Description", "Project Manager", "Est Start Date", and "Est Finish Date". The right-hand panel includes fields for "PO Number", "PO Date", "Billing Format", "Act Start Date", "Act Finish Date", "Dist Code", "Fixed Fee", "Amount", "Total Amount", "Tax Class", and "Status".

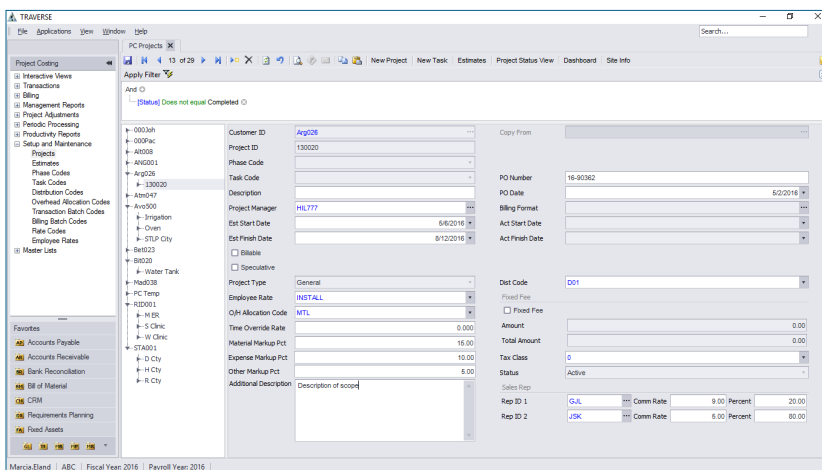
The Projects Maintenance screen filters easily to help you find the project, phase, or task you need to update.

- Use the Transactions functions to enter material, expenses and other activities directly.
- Assign all tasks to one project manager, or delegate each task to a different manager.
- Select from several transaction types, including Time and Material, Expense and Other.

PROJECT COSTING

Additional Features:

- Set up Time-and-Material or Fixed-Fee Projects.
- Set up projects to accumulate administrative costs.
- Assign different GL distribution codes to each project or task level.
- Assign different tax classes to each project or task level.
- Assign different cost and billing rates to each employee using user-defined descriptions.
- Use the interactive view functions to obtain information about specific projects or tasks and drill down for greater detail.
- Enter time tickets using a time-saving batch processing capability.
- Use Accounts Payable transaction entry to apply charges directly to projects or jobs.
- Transfer materials directly from inventory to projects or jobs.
- Gain better control of your work in process with automated billing of posted time and material charges.
- Bill for deposits on projects.
- Place billing holds on projects or tasks.
- Create credit memos for Time-and-Material projects directly from the billing history file.
- Apply deposits or advances directly against invoices in AR transaction entry.
- Use the Purchase Order module to print POs and to track project costs from the time a purchase order is entered.
- Transfer entries in the Purchase Order module to Accounts Payable.
- Allocate overhead to projects or tasks based upon accrued time or material.
- Comprehensively write off charges for entire projects.
- Close projects and tasks independently, restricting subsequent charges from being made to specific project levels.
- Interface with TRAVERSE Payroll.



TRAVERSE Project Costing's new interactive views give you broad control over the ability to recall information, save views for later use, and produce reports in a variety of formats.

Project Costing Reports:

- Income Analysis Report
- Profit Analysis Report
- Cost Variance Report
- Time Ticket Journal
- Overhead Allocations Report
- WIP Billing Worksheet
- Fixed Fee Billing Worksheet